

PORT OF BOSTON

EST 1884

Port of Boston Ltd, Boston
Lincolnshire PE21 6BN

Tel: 01205 365571 Fax: 01205 310126

<http://www.victoriagroup.co.uk>

Dated: 16.01.2019

NOTICE TO MARINERS 006/2019

Dredging Operations

Mariners are advised that dredging operations within the Haven, in the vicinity of the barrier location are due to commence on Friday 18th January and is being carried out by TMS Ltd.

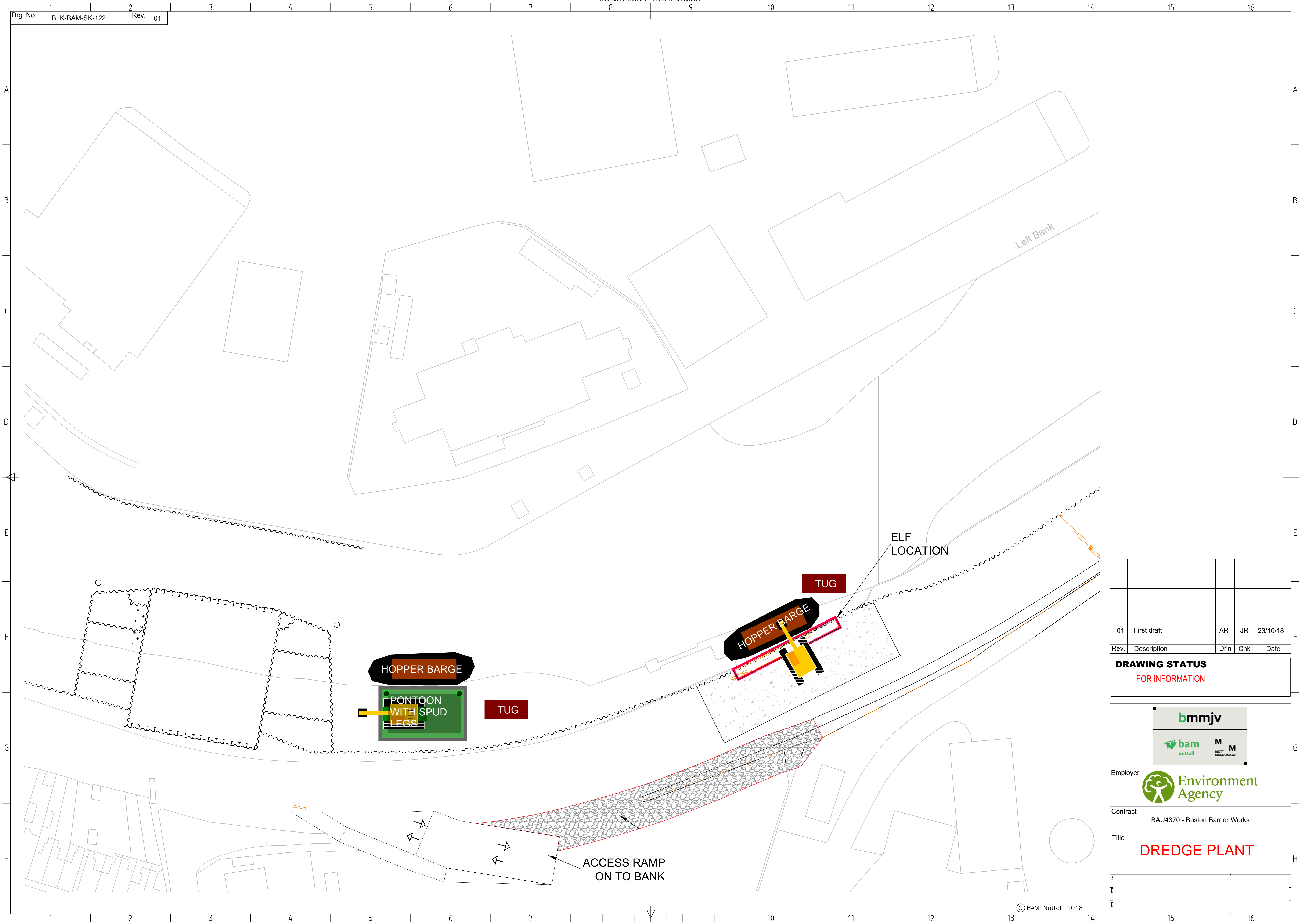
The waterborne dredge plant/equipment will consist of a pontoon type spud legged work platform with a 20t long reach slew excavator onboard, 2 90t hopper barges and 2 NATO workboats. The hopper barges will be unloaded by a land based excavator to the South (right) Bank in the vicinity of the former Witham Wharf. The attached drawing shows the plant layout in the river.

Mariners are advised to proceed with caution when passing the barges and where possible to give them a wide berth.

The Barrier Guard vessel "Beyond Zero" will remain on duty and be contactable on VHF Ch12.

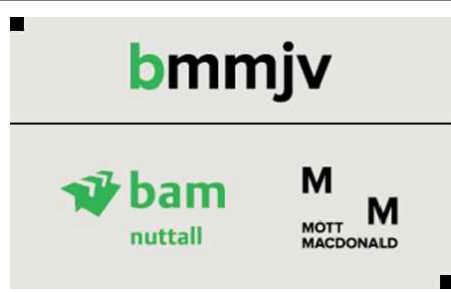
This notice remains in force until dredging operations are complete.

Harbour Master
Port of Boston Ltd
01205 365571



01	First draft	AR	JR	23/10/18
Rev.	Description	Dr'n	Chk	Date

DRAWING STATUS
FOR INFORMATION



Employer  Environment Agency

Contract	BAU4370 - Boston Barrier Work
----------	-------------------------------

Title

DREDGE PLANT