



KING'S LYNN CONSERVANCY BOARD.

Notice to Mariners No. 26/2018.

East Coast of England - The Wash

Approaches to Kings Lynn

Charts: BA 108, BA 1200, Imray Y9

Establishment of new Isolated Danger Buoys

Mariners are advised that on or about 17th October 2018, 2 new Isolated danger navigation buoys will be established to indicate 2 newly designated **Foul Ground*** areas on the seabed at the following locations:

Buoy "**Z6**": Isolated Danger buoy, at Lat 52° 57.520'N, Long 000° 19.165'E

Buoy "**Z9**": Isolated Danger buoy, at Lat 52° 59.735'N, Long 000° 22.750'E

Each buoy will be coloured black with a red band, with a light of character Fl (2) 6s and be fitted with a topmark of 2 x vertical black balls.

Each area of **foul Ground** extends for a **radius of 250m** centred on the above positions.

***Foul Ground** is defined as "**as an area of foul ground, not dangerous to surface navigation, but to be avoided by vessels anchoring, trawling etc**".

The chart symbol for foul ground is a pecked line surrounding a # symbol.

The attached chart extract details the location of the foul ground and associated Isolated Danger buoys.

For further information contact the Harbour Office.

15th October 2018.

P.M Bailey.

Deputy Harbour Master.

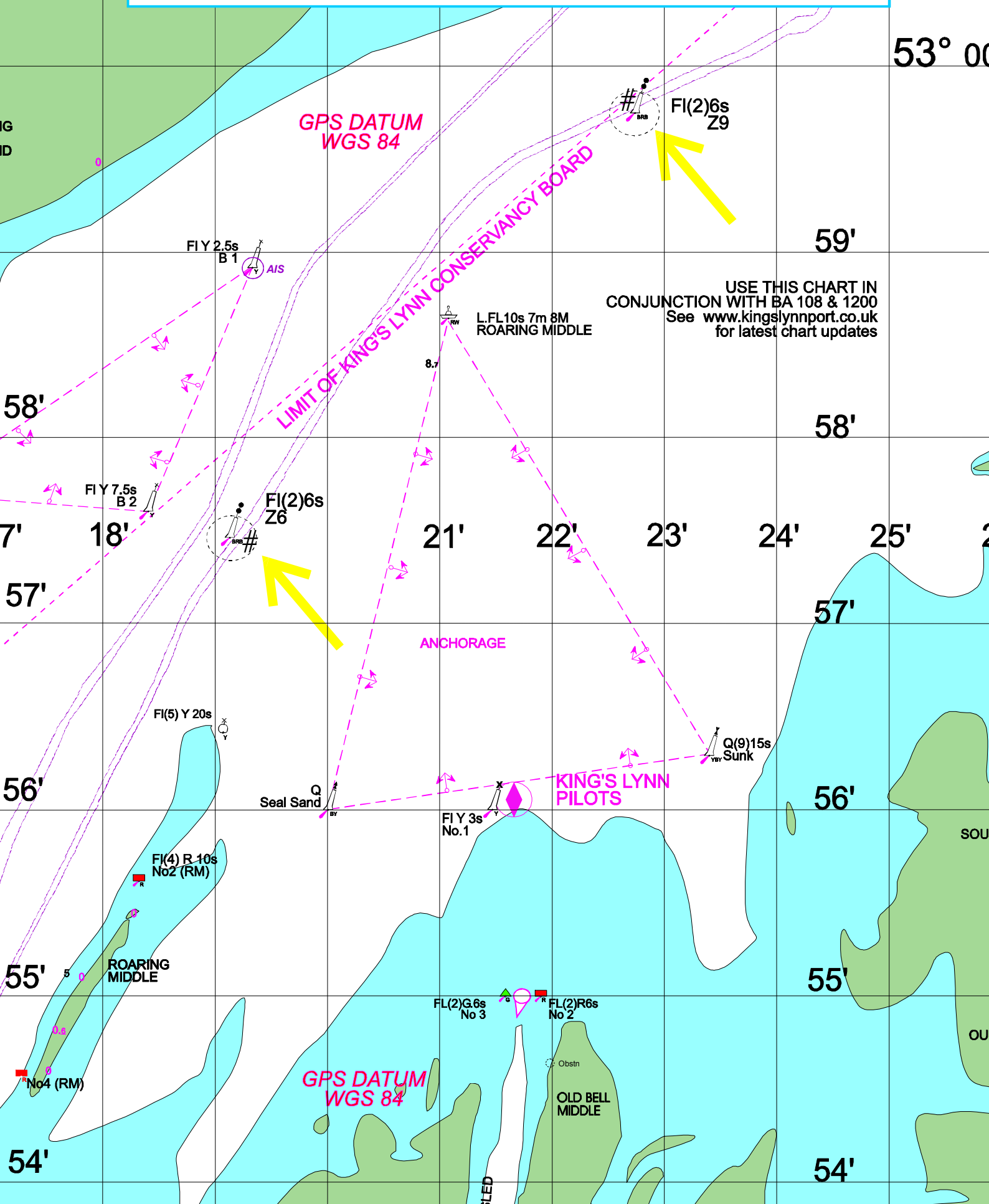
King's Lynn,

Norfolk PE30 ILL

Tel: +00 (0) 1553 773411

www.kingslynnport.co.uk

KLCB Chart Extract to accompany Notice to Mariners 26/2018



USE THIS CHART IN
CONJUNCTION WITH BA 108 & 1200
See www.kingslynnport.co.uk
for latest chart updates