

PORT OF BOSTON

EST 1884

Port of Boston Ltd, Boston
Lincolnshire PE21 6BN

Tel: 01205 365571 Fax: 01205 310126

<http://www.victoriagroup.co.uk>

Dated: 18/04/2024

NOTICE TO MARINERS 011/2024

Hornsea 3 OWF Cable – Duct Storage

Mariners are advised of the upcoming temporary storage/anchoring of the Hornsea 3 Windfarm cable ducts within the Wash in close proximity to the Boston anchorage.

Please see below reproduction of the Orsted contractor – Leask Marine's Notice to Mariners.

Subject to weather conditions, work to deploy the moorings will commence on 1st May. The ducts will arrive on the 3rd May and be in storage for approximately 3 months.

A further notice will be issued once the ducts are in storage.

Harbour Master
Port of Boston Ltd

Notice to Mariners- Initial Maritime Safety Information

Marine Operations: Leask Marine Ltd
Organisation submitting information and for whom the work is being conducted.

Contact Details:
Operations Director - Oliver Bethwaite.
Office – 01856 874725
Mobile 07966228830
Project Manager – William Dempster
Mobile 07949 410 771

Details of the works programme

Title: Port of Boston Duct Operations

Dates: 01-05-24 to 11-05-24

Vessel Operation on-site: MV C-Odyssey



MV C-Force



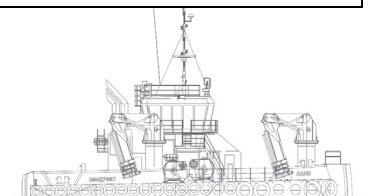
C-Horizon



Goliath Vig-TUG



C-Defender – Line Boats



Location: The Wash area near the Port of Boston

Operation Summary: The operation will be conducted by Leask Marine and will include the deployment of temporary moorings and storage of 4 ducts 450mm diameter 1000m long.

Proposed Vessel Route: Vessel transit from Kirkwall, Orkney. Stathelle, Norway. MHCC/Boston Harbour will be notified of all operations and movements.

Details of any areas to be avoided: Vessels are requested to maintain a minimum distance of 100m from the box created from the coordinates stated below.

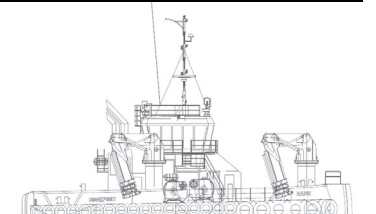
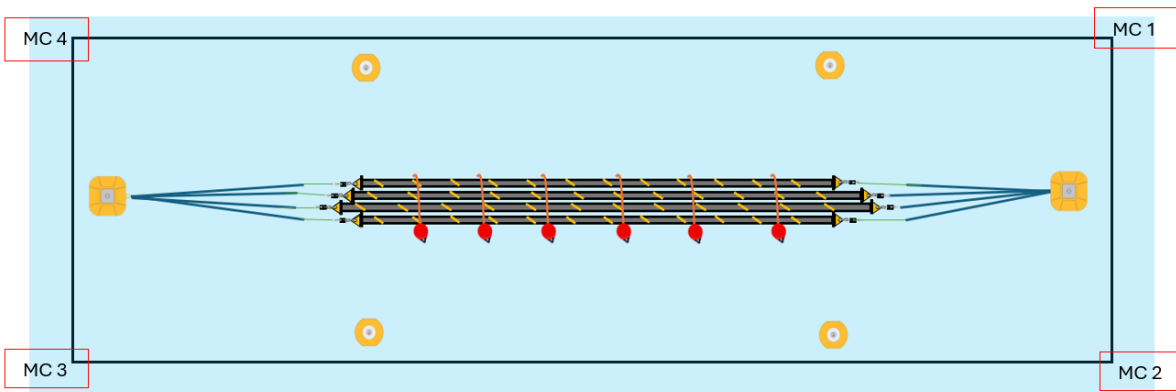
Details of lights, buoys and other navigational aids: Mooring buoys are marked with the Colour yellow - flash yellow light – 1 FY5s – Light range 1nm. All mooring buoys will have one marker light attached 6 lights in total. A2 buoys with reflective SOLAS tape will be installed every 140m along the length of the duct a total of six buoys.

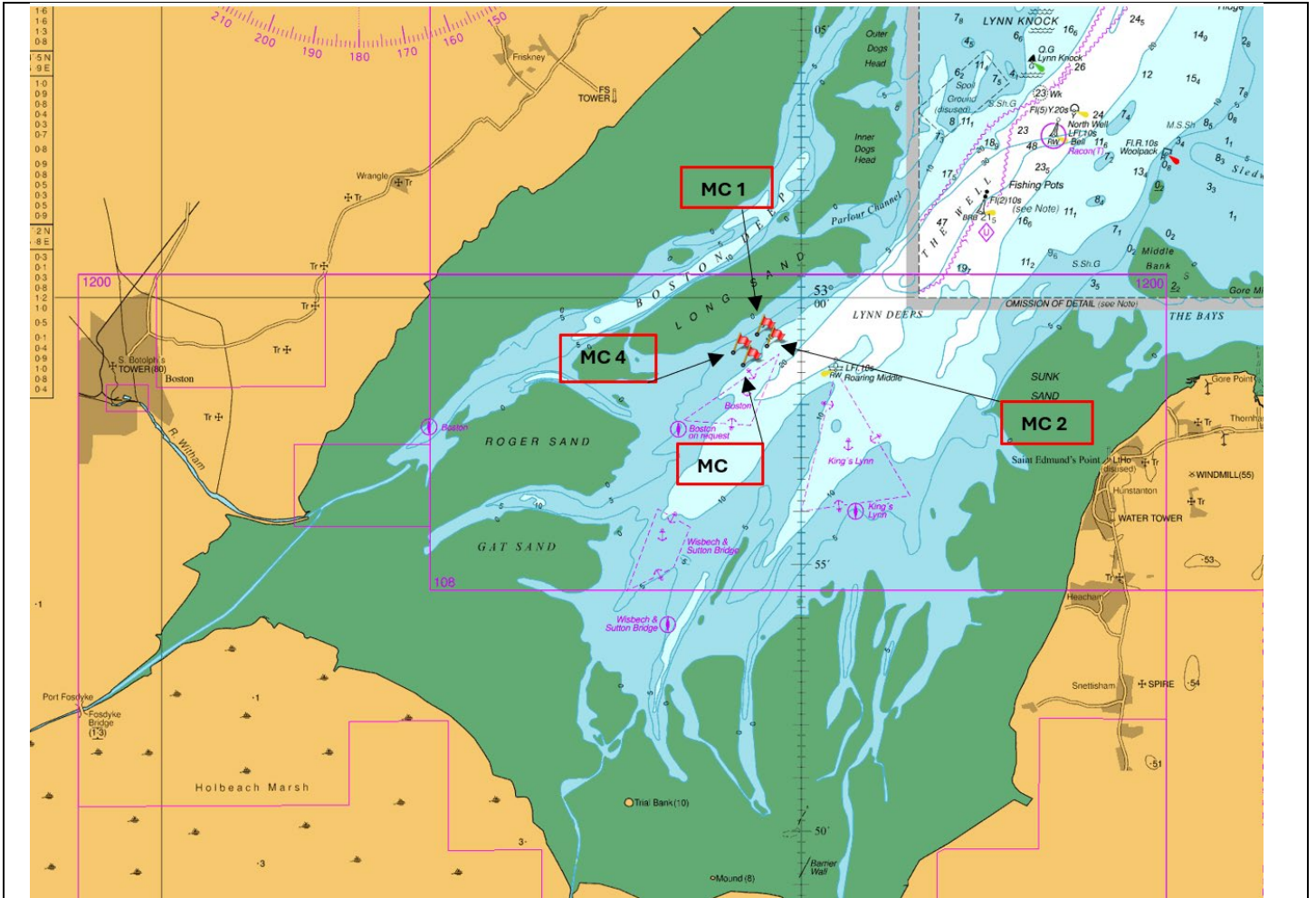
Instructions to vessels: Vessels involved will be keeping continuous listening watch on Channel 16 and 6 and will display appropriate lights and marks as required by the International Rules for Preventing Collisions at Sea. Mariners are requested to give the area a wide berth.

Positions of the Asset:

Coordinates for the area to which the ducts would be located are below.

Mooring/ Asset	Lat/ Long	Easting	Northing
		Zone: 31n	
MC 1	52°59.302' N 0°18.638' E	319485E	5874368N
MC 2	52° 58.083' N 0°18.945' E	319814E	5873942N
MC 3	52°58.728' N 0°18.188' E	318942E	5873316N
MC 4	52°58.955' N 0°17.887' E	318621E	5873748N





Name: W. Dempster

Signature:

Date: 17/04/2024

